



**LANGUAGE PACKAGE  
DOWNLOAD  
USER MANUAL**

## Revision Records

Vision	Date	Author	Description	Note
V1.00	2010-8-26	Cheng Cao	First draft	
V1.01	2010-9-2	Yaru Wang	R2 release formally	

## Content

<b>Revision Records.....</b>	<b>2</b>
<b>1 Overview .....</b>	<b>4</b>
1.1 SCOPE .....	4
1.2 INSTALLATION ENVIRONMENT .....	4
1.3 FILE MANAGEMENT .....	4
1.4 ABBREVIATIONS AND DEFINITIONS.....	5
<b>2 Operation Notice.....</b>	<b>6</b>
2.1 INSTRUCTION .....	6
2.2 NOTICE.....	6
2.3 WARNING .....	6
<b>3 Operation Guide .....</b>	<b>8</b>
3.1 STEP 1: GET LANGUAGE PACKAGE .....	8
3.2 STEP 2 : PREPARATION BEFORE DOWNLOADING .....	8
3.3 STEP 3 : DOWNLOAD LANGUAGE PACKAGE .....	8
<b>4 Operation verification .....</b>	<b>11</b>

# 1 Overview

## 1.1 scope

1. This document provides operation guide both for dealers, salespeople, customer service of Hytera and other people who need necessary updates or changes to the language supported by DMR radio.

2. The model and host software version this document applies to: PD780X/MD78X V2.00.08.000 version and the later.

3. The CPS version this document applies to: V2.00.07.000 version and later.

## 1.2 Installation Environment

CPS, used to download language package, can be installed on Windows platforms (including Windows XP, Vista and Windows 7) .For more information, please refer to “CPS Manual”.

## 1.3 File Management

Language package is named in the form of “area name” + “type name”, with” .bin” as file suffix. For example, the language package file used for Asia & Pacific portable will be named “AS8 Portable.bin”. Table 1.1 contains all language packages.

Table 1.1 Language Packages

Area	Portable	Mobile
CHS	CHS Portable.bin	CHS Mobile.bin
EM5	EM5 Portable.bin	EM5 Mobile.bin
SA6	SA6 Portable.bin	SA6 Mobile.bin
AS8	AS8 Portable.bin	AS8 Mobile.bin

Note : The language package files only relate to radio type, and the same type can share the same language package files. That is, PD78X hand-held radio and its derivative models share all portable language packages. MD78X mobile radio and its derivative models share all mobile language packages.

## 1.4 Abbreviations and Definitions

Abbreviation	Full Name	description

## **2 Operation Notice**

### **2.1 Instruction**

In the subsequent version, we will increase support for other languages, please contact your local customer service.

### **2.2 Notice**

1. Do not download language package to incompatible model, which may cause the font too large, too small, showing incomplete and other abnormal. If it occurs, please re-download the appropriate language package to be normal.

2. Downloading different language package will automatically replace all languages other than English. Before downloading language package , please confirm whether to replace the original one. For example, a radio supports English, Simplified Chinese currently. After downloading EM5 Portable.bin, it will only be seen the resumption of English, German, French, Pulaski, Spanish , Turkish and Russian.

3. English Language Package can not be deleted or replaced, which ensures that there is a language used by radio all the time.

4. If the language package is not what you want, please refer to Table 1.1.

5. If the default language combination can not meet you need, please contact local customer service.

6. Due to the limitation to radio storage space, it may not satisfy your desire of language combination. (For instance, including all supported languages)

### **2.3 Warning**

1. Please do not shutdown, power off or disconnect the write frequency line from computer in the process of language package downloading. Otherwise, download will be disrupted. If language package doesn't download successfully, radio will display in English defaultly after restarting. And it is necessary to re-download language

package in order to restore the original language.

### 3 Operation Guide

#### 3.1 Step 1: Get Language Package

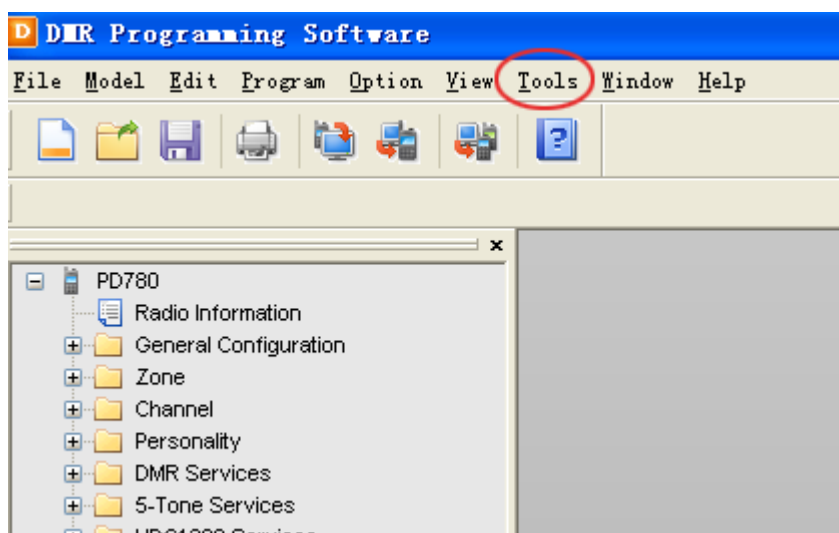
If you do not get the required language package file, please contact local customer service.

#### 3.2 step 2 : Preparation before Downloading

1. Please install CPS corresponding to host software version. You can refer to “CPS Installation Manual” for method.
2. Please ensure that the correct USB driver had been installed. You can refer to “USB Driver Installation Guide” for method.
3. Please connect radio to PC in which the CPS and the language package have been installed. Please ensure that portable has enough power and mobile has been connecting with stable power supply.

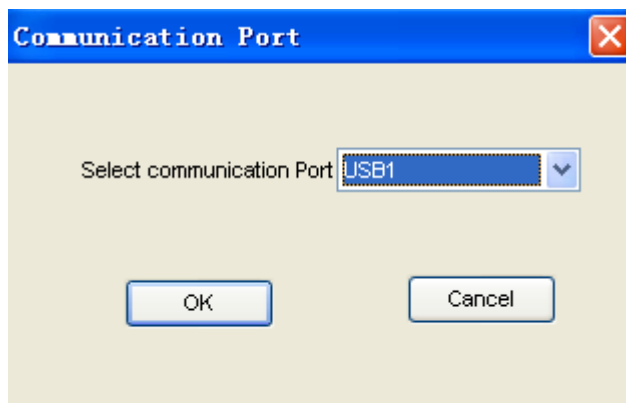
#### 3.3 step 3 : Download Language Package

1. Start CPS corresponding to the host software, click “Tools”:

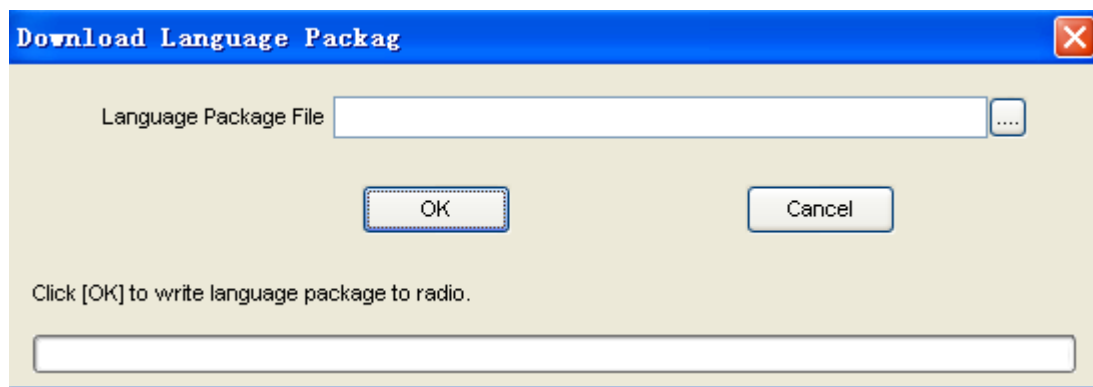


2. It may appear to select USB port in the windows.

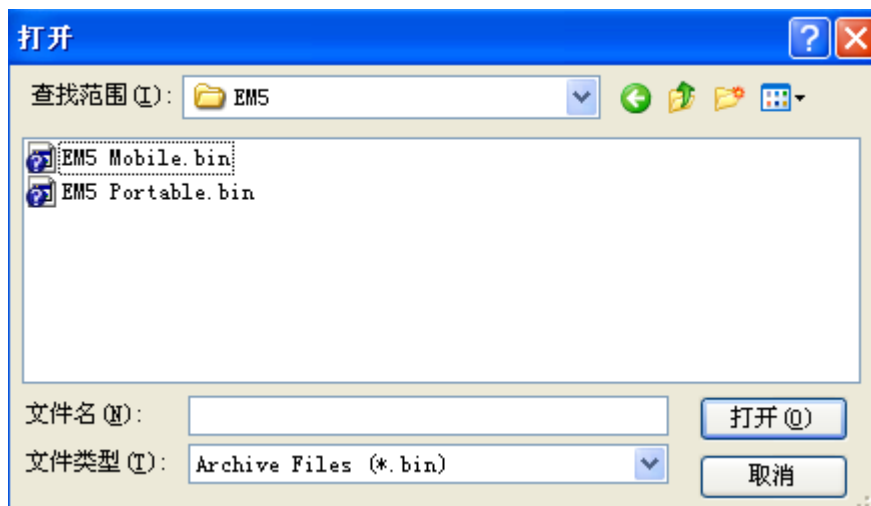




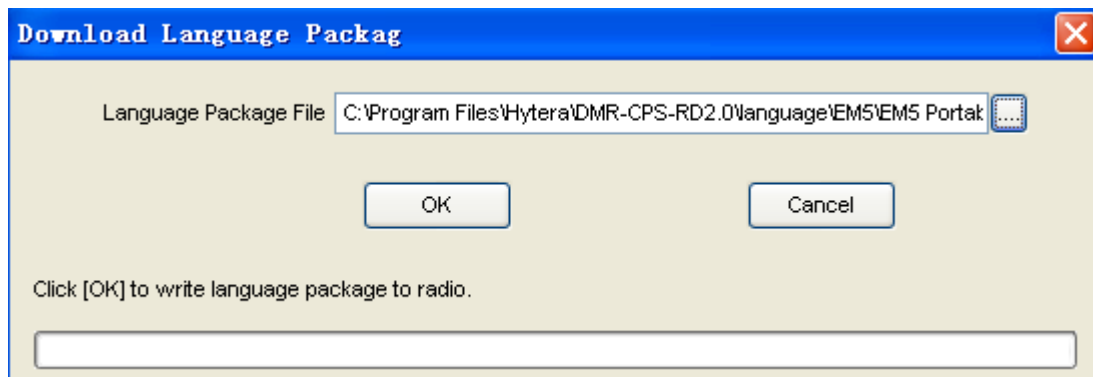
Please select the correct USB port, then select "OK" to start downloading.



3. Click "... " to select language package prepared on the step 1.



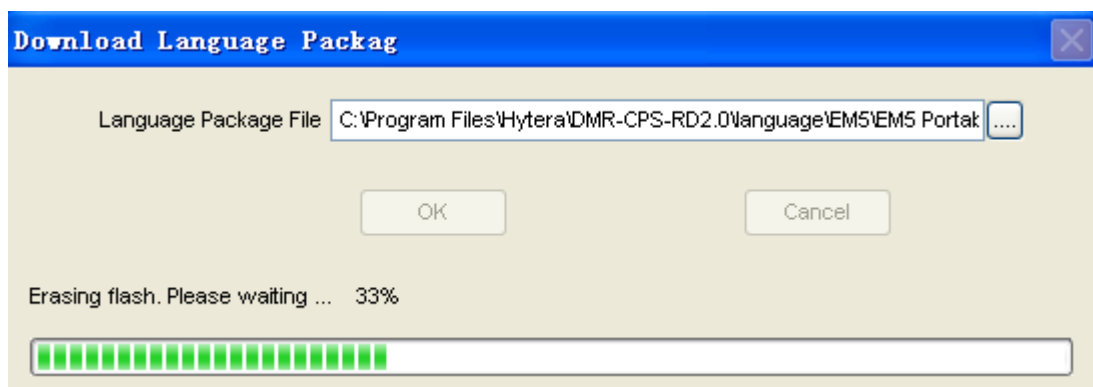
Click to open:



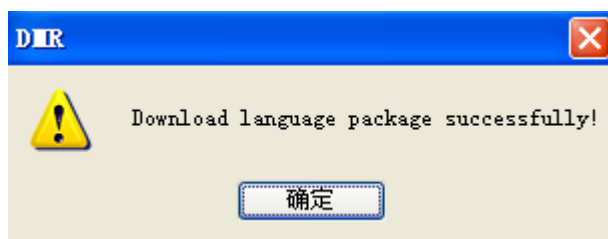
Users can store language package at:

C:\Program Files\Hytera\DMR-CPS-RD2.0\language.

4. Select "OK", it will begin to enter the downloading process:



5. After downloading completing, message will come out and radio will restart automatically:



Thus, language package downloading is complete.

## 4 Operation verification

You can verify whether the language package downloads successfully or not by the following methods:

1. Start the radio.
2. Access to language menu by “Menu->Settings->Radio Set->Language”.
3. Check if the languages contained in language package have been added to menu.
4. Select the language you want to switch, press “Select”.
5. Exit” Language” menu, browse other menus to check whether language changes successfully or not.